



neighbors helping neighbors rebuild after life's storms

# onward&upward



food programs • island based education • social & senior services • helping hands & financial assistance



# onward &



FISH ON THE GROUND

*"FISH continues to be a responsive, first point of contact for islanders in need of help. Weathering storms of all kinds and being 'boots on the ground' is what we're all about."*

—Maria Espinoza  
Executive Director

# upward

Dear Friends of FISH,

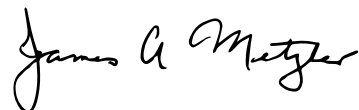
This is the most challenging of times ever for FISH and our beloved community. We have faced several disasters in the last five years but Hurricane Ian and its path of devastation tops the list. We cannot stress enough how proud we are of FISH, our staff, our volunteers, our community members and partners who have raised the bar for what ***neighbors helping neighbors*** means. Additionally, we are grateful for our supporters from around the world. They immediately sprang to action to ensure we had the resources necessary to be some of the first responders on the ground helping our islands in the recovery process.

People do not realize that FISH's work begins before storm season even starts by assisting some of our most vulnerable residents with hurricane planning and communication before, during and after a storm passes. Even without power or cell phone access, and sustaining damage to their own homes, our staff went to local shelters immediately after the storm to bring resources to islanders. ***FISH staff were some of the first people on the island to bring water, ice, charging stations, supplies and hot meals to those on the islands and crews working to begin the recovery.***

Like so many homes and buildings on the islands, the FISH Walk-In Center, which has been ground zero for delivering aid to the thousands of service requests we receive annually, was destroyed by storm surge. While we can use the parking area and structure for some distribution of items and storage, we have had to relocate temporarily to an office space in Fort Myers. However, we are committed to rebuilding a new Walk-In Center where anyone in need can find help and hope.

Our islands will be, in many ways, forever changed by this past year. Witnessing the kindness, compassion and commitment of our neighbors to each other proves that the spirit of community on which FISH is founded is stronger than ever. ***We have stood with Sanibel and Captiva for more than 40 years and we will continue to serve as YOUR island social service organization long into the future.*** There is only one way to go from here—**onward and upward.**

With gratitude,



Jim Metzler, Board Chair



Maggi Feiner, President & CEO





neighbors helping neighbors

# before, during & after the storm

155 MPH

## HURRICANE PREPAREDNESS PACKETS

FISH is committed to the safety and well-being of our island neighbors, and hurricane season is no exception. As Ian demonstrated so vividly this past year, hurricane hazards come in many forms, including storm surge, heavy rainfall, inland flooding, and high winds that can cause devastation and loss. It is essential to be ready **before** a storm approaches. FISH works hard to help neighbors be prepared well before hurricane season even begins by sharing information and resources online, at our Walk-in Center, and at seminars and community events.

### before the storm

Our annual **FISH Hurricane Preparedness Packet** is a valuable island resource available to anyone who requests. The packet provides detailed information on where to go, what to do, and how/when to begin preparing for hurricane season, including:

- suggested do's and don'ts
- list of hotels
- city of sanibel hurricane pass application
- special needs application
- checklists
- list of shelters/map
- pet information
- hotline numbers
- evacuation routes

FISH distributed hundreds of Hurricane Preparedness Packets before season and made calls and visits to seniors and those without family support. If you or someone you know could benefit from this packet or program, please contact us. Packets are *available for download* at **[fishofsancap.org](https://fishofsancap.org)**.



# HURRICANE IAN TIMELINE

- September 21**—Hurricane Committee begins making calls to vulnerable islanders
- September 26 and 27**—FISH assists clients with last minute evacuations; assisted with hotel arrangements, transportation to shelters, and provided hurricane supplies
- September 28, prior to landfall**—FISH sends eblast with latest storm update

## during and immediately after the storm

### September 28—Landfall

*FISH staff began working around the clock from various temporary locations including shelters and hotels to support our community immediately after Ian made landfall. The Hertz Center provided emergency shelter to many of our island residents and FISH was on hand to help.*

**September 29**—24 hour hotline begins; staff responds to islanders in need, communicating with those who did not evacuate and connecting with the City; creates list of those who need to be evacuated from island; set up group text for team members to communicate

**September and October**—reaches out to all on hurricane list and active volunteers to check on well being; continues coordination to evacuate folks off island; has presence at helicopter drop off locations; reaches out to family members of seniors, volunteers, etc. until reaching an **'all accounted for'** list

**September to current**—**FISH made 419 pre and post hurricane calls** to communicate conditions, updates, status and services via social media





TIMELINE CONTINUED

## after the storm

### October and November—

*With the Causeway severely damaged and not passible, FISH used boats for transportation to be among the first “boots on the ground” to begin the work of recovery. We provided immediate needs such as gas cards. We coordinated with partner agencies such as Harry Chapin, Midwest Food Bank and others to bring additional resources to the islands including limited food supplies and hygiene items. We connected people with information and resources, temporary housing, and mental health services. We delivered supplies and conducted regular check-ins to displaced seniors. We helped islanders with FEMA and SBA applications for emergency assistance. We connected unemployed workers with job opportunities off-island. We continued assisting anyone reaching out for help. Our clients included many FISH “first-timers” as well as those we have served over the past 40 years.*

**October 4**—FISH sends update eblast; establishes website resource page; works w/City on hurricane passes for essential team and volunteers; provides guidance for FEMA applications

**October 5**—FISH provides info and coordinates w/Operation Blue Roof; works w/DCF for mental health assistance; podcast w/NPR

**October 6**—FISH staff returns to island to assess damage and begin setting up crisis response stations with partner agencies

**October 7**—sends eblast to FISH volunteers; coordinates w/Lee Health for locations; begins listing mobile pantries around SWFL

**(on or around) October 7**—begins seeing clients at a temporary United Way Fort Myers location

**October 10**—begins distribution of **24,000 10lb. bags of ice** and **10,341 cases of water** in partnership with United Way and the Lee County Emergency Operations Center in multiple locations on the islands





**October 11**—FISH informs on mail service status; begins supply distribution; Causeway reopens for emergency services/truck convoy

**October 12**—distribution of tarps and **1,080 buckets with cleaning supplies** at multiple island locations

**October 13**—FISH bike distribution

**October 14**—begins initial food distribution w/Mission BBQ; then long term w/Operation BBQ

**October 15**—provides tarps through United Way partnership

**October 20**—building damage update

**October 21**—FISH provides charging stations; Causeway reopens for civilians

**October 22**—begins coordination w/on-site FEMA and SBA applicant services

**October 23**—partners with Capacity Path to provide mental health assistance for survivors

**October 28**—partnership with Rotary provides disaster aid trailer for islanders to borrow tools

**November 3**—Maria gives on the ground update at Rotary; **9,500 emergency supplies distributed to date**

**November 6**—partners with American Legion to open mobile Comfort Stations for islanders to shower and do laundry

**November 7-10**—informs and updates islanders of Tropical Storm/H1 Nicole approaching area

**(on or around) November 8**—FISH secures our own temporary location at 15550 McGregor Blvd., Fort Myers and restarted many existing programs, including holiday assistance, in addition to immediate hurricane response

**November 21**—FISH and Operation BBQ provide 350 frozen Thanksgiving Day Meal Kits to island workers; only 35% of residents had electricity so heat source was also provided in partnership with Weber-Stephens

**November 22**—provided blessings of food and fellowship for island neighbors with a community **Friendsgiving Event** celebrating Thanksgiving; event made possible with the help of our generous community, agency partners, and volunteers; special thanks to The Community House, St. Michaels Church, Sanibel Community Church, Midwest Food Bank and Operation BBQ





## As the holidays approached—

*FISH continued Hurricane Ian recovery help while providing special events and programs to add holiday cheer. We offered opportunities for Adopt-a-Family, Adopt-a-Senior, and Bike Distribution. and new in 2022, "FISH Stockings" filled with small gifts and treats for each person in the home. These programs were supported by many with special thanks to our community partners—Ashton Kirchner Group-Keller Williams Realty Fort Myers and The Islands, Big Arts, Billy's Bike Shop, Captiva Civic Association, and The Great White Grill.*

**December 2**—participates in Luminary Night at Bell Tower

**December 5**—FISH releases first **onward and upward** video

**December 6**—coordinates toy/senior holiday drive with BIG ARTS and the Captiva Civic Association

**December 14**—bike distribution with Billy's Bikes

**December 20-23**—holiday gift distribution at Sanibel and Fort Myers locations

**December 20**—FISH welcomed island residents for a **Winter Holiday Meal** in partnership with Cielo, Operation BBQ and The Community House of Sanibel

**December 22**—in partnership with Operation BBQ, FISH distributed holiday meal kits to the community with the option of enjoying a hot meal or taking home a frozen meal to heat and eat

**December 30**—blanket/cold weather distribution





# the path ahead

## REGROUP & REBUILD

**The top priority of FISH has been—and always will be—helping our neighbors.** While we have remained a strong and steady presence throughout Hurricane Ian, we are not without our own challenges and losses. Like many others, our building was destroyed as a result of storm surge, flooding and damaging winds. Our temporary Fort Myers location is providing an adequate space to regroup and carry on some of our programs, but certainly not all. **But we are determined to rebuild.** It won't be long before we regain full operations within our traditional 4 pillars of service that our island neighbors have come to depend on. The needs continue to grow, and our services remain vitally important to our island communities. **We are confident that our caring neighbors and generous donors—from near and far—will be here for us as we move onward and upward together.**



Hello from London,  
I know that you've been going through some very  
tough times lately. Despite this I believe that  
the situation will get better and the sun will  
shine again.

Yours sincerely  
Daniel, 9 years old





# food programs

FILLING BELLIES & NEEDS

Food insecurity is often the first symptom of a larger problem within a household and initially brings a family to FISH for help. Being unsure of **if** or **when** you can put food on the table is a frightening place to be. Following Hurricane Ian, access to food was an issue facing many who never imagined themselves in that position before. Whether a chronic issue or the result of a crisis, FISH helps nourish families—from kids to parents to our senior neighbors. Through our various food programs, FISH is responsible for putting thousands of meals on Southwest Florida family's tables.

## food pantry

Helping families bring food to the table through our Food Pantry program is often the first time we get to meet households in need. FISH is here to ensure our neighbors—whether working families or seniors on fixed incomes—have access to nutritious food consistently. **In 2022, FISH saw 5,722 food pantry visits and distributed 259,270 pounds of food through the Pantry program.**

## meals-by-FISH

Through our partnership with Bailey's General Store—and now Jerry's Foods due to hurricane damage to Bailey's—FISH volunteers deliver daily hot meals to seniors on Sanibel and Captiva who are unable to cook for themselves on a regular basis, or for those who may need short-term assistance, such as during a recovery from a medical procedure. Aging or mobility issues should not get in the way of our neighbors receiving regular and nutritionally balanced meals. **In 2022, FISH distributed 3,233 hot meals to island neighbors.**

## holiday meals

Spreading hope and light to those we serve is at the center of our Holiday Meal program. Each Easter, Thanksgiving, and Christmas the community comes together to raise funds, donate food, and assemble meals for families to celebrate together at home. **FISH distributed 1,085 holiday meals in 2022.**







*"The FISH food pantry offers so many basic items we need everyday but can't always afford. It has been a source of help and hope for our family when we've needed it most."*

—a FISH client





# island based education & outreach

## PROGRAMS THAT EMPOWER

Enriching and connecting our community through educational opportunities is an important piece of our wrap-around service. Empowering neighbors through this gift—whether it's a fun painting class, an informational workshop or awarding much-needed scholarship funds—provides access to resources and activities that change lives and strengthen our community as a whole.

### **scholarships**

Our adult scholarship program assists those living and working on the islands in furthering their education. FISH scholarships open doors to help neighbors move their careers forward or even gain new credentials to make positive career changes, paving the way to more stable jobs, upward mobility and brighter futures.

### **workshops**

Through our network of nonprofit and business partners in Southwest Florida, FISH is proud to offer workshops on a wide range of topics including health and wellness, issues affecting our aging populations, and even budget and finance courses. We listen to the desires, needs and challenges of our community members and bring activities, information and experts to them at no cost.





# social and senior services

FISH is committed to helping those aging in place on Sanibel and Captiva to do so with dignity and support. With a dedicated Senior Services Director at the helm, FISH provides resources for connectedness, technology, and care to our senior islanders with numerous programs.

## hurricane preparedness

Helping vulnerable islanders prepare for hurricane season is a top priority and one of FISH's longest-standing programs. This year, we saw just how critical those plans can be. FISH works with islanders before a storm to create a plan, ensures they know when to put their plan into action, and follows up after a storm. Additionally, we produce a resource packet with up-to-date relevant disaster information.

**In 2022, FISH distributed 240 Hurricane Packets.**

## home health resources & daily reassurance

The FISH Home Health List is an aggregated list of home health care providers ranging from companions to RNs. FISH provides initial background checks to give recipients and their loved ones peace of mind. Additionally, our Daily Reassurance and Visitation program pairs FISH volunteers with island seniors for a scheduled call or visit, to check in quickly or chat.

**FISH made 1,632 reassurance calls last year.**

## smile boxes

Combatting social isolation and its mental and physical effects on aging adults is central to many of our senior service offerings. Smile Boxes began during the height of the COVID-19 pandemic to find ways to connect with isolated seniors. Each special themed box delivered by FISH volunteers includes items that are enriching, fun, and often tasty to bring a smile to their face and remind them that their neighbors are thinking of them. **FISH happily distributed 518 Smile Boxes in 2022.**





# helping hands

## & FINANCIAL ASSISTANCE

FISH is honored to offer a helping hand to our neighbors—removing obstacles and creating opportunities for families to thrive. We continue to provide a safety net of emergency financial assistance to help cover rent, utilities, healthcare, & other necessary expenses for families dealing with short-term financial crises. Our professional staff helps with immediate needs while working with clients to develop a long-term plan for financial recovery and independence. **FISH provided 5,435 instances of Case Management in 2022.**







*"I now find myself on the other side of FISH's goodwill, and it's humbling. I cannot find the words to express my gratitude during my family's difficult time. Thank you for making a challenging time a little easier."*

—a FISH client



## pivoting to help more people in more ways

In the aftermath of Hurricane Ian, more islanders than ever are now in a position of needing help. **FISH is providing that help to people of all ages, and in all economic brackets.** We have pivoted responsively and creatively to help in new and unexpected ways.

As islanders continue to struggle through sorting debris, cleaning, repairing and rebuilding structures, replacing furnishings, and turning their damaged houses into homes once again, FISH is there. We've partnered with businesses and organizations to provide resources and much needed supplies and help ease some of the financial burden that so many are facing. From free drywall distribution to bedding, rugs and cleaning supplies, FISH has become a greater blessing and resource than ever for our island neighbors.



*"I cannot thank you enough for approving my request for assistance, as my family is struggling to cover both property repairs and funeral expenses due to the hurricane, and I want nothing more than to contribute and help alleviate this burden. Thank you!"*

—a FISH client



# amazing donors

MAKE IT ALL POSSIBLE—THANK YOU

## VISIONARIES

Anonymous (1)  
Dixie & Robert Bowden  
Charitable Foundation of the Islands  
Maggi & Don Feiner  
Joan & Don Sherman  
The LAT Foundation  
The Sanctuary Golf Club Foundation  
The Theodore Cross Family  
Charitable Foundation

## CHAMPIONS

Anonymous (7)  
Alice M. O'Brien Foundation  
Liz & Jim Birmingham  
Barb & Todd Bluedorn  
Christina Donohue  
Barbara & Tom Dunham  
Estate of Breese Tomick  
Jo & Manny Fernandez  
Leslie Fleischer  
Glenmede Trust Company  
Grace Family Foundation  
Lisa & Gregory Larkin  
Leslie Alexander Foundation  
Inky & Jack Meng  
Pat & Frank Middendorf  
Middendorf Family Foundation  
Kay & John Morse  
Mary & Jim Nelson  
Beth & John Newland  
Donna & John Schubert  
St. Michael & All Angels  
Episcopal Church  
The Burke Foundation  
The Campbell Foundation  
The Right Hand Foundation  
United Way of Lee, Hendry & Glades  
Wescustogo Foundation  
Kathy & Bob Wiesemann  
Wilshire Charitable Foundation

## LEADERS

Anonymous (1)  
Catherine & Ed Anderson  
Ann H. Symington Foundation  
Arizona Community Foundation  
Margie & Mike Bennett  
Susie & Jim Berg  
Barbara & Jim Brady  
Ron & Debbie Brooks  
Judith & Robert Burgstahler  
Chapel By The Sea  
Amanda Cross  
Custom Ink LLC  
Sally & Tom Dina  
Dulce & Jim Doss  
Kathy & John Dubuque  
Sharon & James Ellen  
Emergency Food &  
Shelter Program  
Mika & David Filkins  
FISH of Sanibel Captiva  
Foundation  
Foundation of CA  
Susie & Steve Fritze  
Sherry & Doug Gentry  
George William Andrews  
Charitable Foundation  
Kelly & Christopher Gould  
Jean & Bob Gryzmala  
Jeanie & William Haas  
Hedden Family Foundation Inc  
Timothy Horne  
Kerscher Family Foundation  
Lawson Family  
Charitable Foundation  
Linnemann Family Foundation  
Linda & Nick Linsmayer  
Kristin & Dudley Malone  
McGrath-Spellman  
Family Foundation

Jerri Mihaly  
Lisa Ann & Bob Miller  
Barry Moss  
Pagel Foundation  
Barbie & Scott Pressly  
Ellen & Dave Raisbeck  
Rotary Club of Sanibel-Captiva  
Sanibel Captiva Community Bank  
Sanibel-Captiva Kiwanis Foundation  
Sargent Family Foundation  
Barbara & Garry Scheuring  
Nancy Smith  
Sheridan & Dick Snell  
Gertrude & Andrew Snope  
Solstice Foundation  
Alice & Fred Stanback  
Debbie & Mike Szymanczyk  
The Seraph—  
A donor advised fund  
Cindy & Roger Timm  
Sue & Chuck Turner  
Verizon Foundation  
Amy Lou Waters  
Diane & Robert Williams

## PARTNERS

Anonymous (2)  
Jane & Don Adams  
Nancy & Guy Arvia  
Christine & Michael Attardo  
Bank of the Islands  
Dean Barry  
Carolyn & Thomas Berger  
Patricia & Anthony Brunsing  
Mary & Dick Butler  
Patricia Camp  
Cape Coral Community Foundation  
Heather & Alexander Cianfranco  
Cielo Restaurant & The Boler  
Family Foundation  
Community Foundation of  
Tampa Bay  
Angela Crisler  
David S. Baum Foundation  
Dayton Inc  
Kristin & Chris French  
Susie & John Freund  
JoAnn & Robert Glick  
Kathleen & John Green  
Alice & Alan Greenspan  
Cathy & Mick Hanratty  
Patricia & Larry Hummel  
Deloras & Donald Hunter  
Mary & Dick Jalkut  
Jerry's Enterprises  
Sarah Ashton & Jim Metzler  
Dan Kahn  
Wendy & John Kindig  
Marianita Pardo &  
Laurence Schmukler  
Rocio Lopez Fontela  
MLB Players Trust  
Linda & Gene Massey  
Hannah & P.J. McAfee  
Kathy & John McCabe  
Douglas McLemore  
McShane Family Fund  
Marge & Joe Meek  
Suzie & Vince Nowell  
Onan Family Foundation  
Robin & Fred Perry  
Jane Pettibone  
Nathalie & Dick Pyle  
Donna & Ron Ripley  
Jenny & Bill Rosenberg  
Peg & John Royse  
Mary Jean & Jay Sanders  
Sanibel Captiva Trust Company  
Sanibel Congregational  
United Church of Christ  
Vreni Scheu  
Bronya Schmoyer

Dawn Schumann  
Jane & Buzz Shepard  
Dan Sierra  
John Stiker  
Ginny & Ed Stringer  
Pamela & Robert Terry  
The Cara Foundation  
David Thompson  
Christopher Toth  
Rosemary Ulbricht  
Mary Watson  
Williamson Family Fund  
Ellen Wilson  
Marilee & Michael Wood  
Melissa & Marc Yelenich  
Michael Zilis

## ADVOCATES

Anonymous (2)  
Linda & Charlie Adams  
Alan Akridge  
Susan Kressley & Gregory Anderson  
Andrea Miller Foundation  
Gwendolyn Andrews Nacos  
Pat & Mike Boris  
Ellen & Bart Brnjac  
Calusa Golf Course  
Superintendents Assoc  
CAMEO of Lee County  
Carol & Cameron Campbell  
Chavurat Shalom of SWFL  
Mary & Red Culver  
Peter Danford  
David & Ellen Petrick Foundation  
Gretchen & Dennis Delman  
Don & Gaither Deluca  
Doc Ford's Rum Bar & Grille  
Dream Vacation Rentals  
Janet Frane





Lenore & Jay Friedland  
Hafener Charitable Foundation Inc  
Melissa & Jason Halliburton  
Donna & Peter Holden  
Howell-Adams Family Foundation  
Illinois Tool Works  
Irving S. Johnson & Alwyn N.  
Johnson Family Foundation Inc  
Marybeth & Kyle Jackson  
Ann & David Joffe  
Sam & Steve King  
Bonnie & Al Koch  
Robin Krivanek  
Suzi & Chris Landes  
Lansbrook Village Food Drive  
Barbara & Robert Lee  
Robert Lord  
Kristi & John MacKinnon  
John MacLennan  
Susan & Charles Martin  
Carol McNaughton  
James Miller  
Pamela & Thomas Miller  
Teresa & Jake Miller  
Mary & Mark Morse  
New Hampshire  
Charitable Foundation  
Craig Odell  
Sue & Steve Peltzman  
Ginny & Mark Reiss  
Elizabeth Reynolds  
Nancy & Chip Roach  
Nancy & Don Rolley  
Lucy & Paul Roth  
Laura & Rhys Rudolph  
Robert & Rosemary Ryan  
Sanibel Captiva Beach Resorts  
Karen & Bill Sartoris  
Ellen Sloan & Marco Neven-Dumont  
Patty & Jim Sprinkle  
Staritch Foundation  
The Tommy & Trudy Williams  
Foundation  
Lynn & Gerhard Thelen  
John Thompson  
Linda & Tom Uhler  
Gloria & Dick Waterhouse  
Watson MacRae Gallery  
Tina & John Wysocki

#### SUSTAINERS

Anonymous (3)  
Adventures in Paradise, Inc  
Monica & Craig Albert  
June Bailey  
Joan & Jim Bajek  
Ann & Charles Balch  
Gretchen Banks  
Bat Yam Temple of the Islands  
Ellen & Stephen Baugh  
Betsy & William Baumgartner  
Clair Beckman  
Vickie & Alex Benyo  
Chuck Bergstrom  
Wendy & Walter Berninger  
April Stout & Bill Johnson  
Bet Billig  
Cheryl & Gary Biltgen  
Robert Bishopric  
Debbie & Tom Braciszewski  
Helen & Philip Bradbury  
Raymond Brennan  
Bridewell-Henning Foundation  
Maryann & Scott Bridge  
Katharine & Doug Britton  
Ruth & William Brooks  
Rebecca Brown

Peter Bukowick  
Claudia Burns  
Maggie & Tom Butcher  
Caterpillar Foundation  
Cedar Chest Fine Jewelry  
Kim & Dede Chart  
Judy & Bill Cheney  
Fay & Jack Chestnut  
Carolyn & Ralph Clark  
Carol Cleaver  
Coastal Vista Design Inc  
Liz & Bill Coffey  
Chris Coile  
Elaine & William Coleman  
Robin & Dave Coleman  
Janet Cragan  
Cathy & Jim Cryder  
Billye & Ralph Curtis  
Laura & Andy Dahlem  
Anne Nobles & David Johnson  
Cindy Dean  
Nancy Dehmow  
Penny Wilkinson & Dick Boehning  
Debby & Rich Donahue  
Doriches Baptist Church  
Nancy DuPont  
Connie Edgar  
David Eichenbaum  
Sally & Peter Ettlinger  
Bonnie & Larry Evans  
David Felker  
Mark Fooksman  
John Fredericks  
Elizabeth Freeman  
Friends Who Care  
Beth Funderburg  
Nicole Garubo  
Melissa & Tom Gauntlett  
Karen & Ken Gill  
Goecke Family Foundation  
Golden Golf Services  
Gordo Golf LLC  
Mariel & Porter Goss  
Joan & Bill Grabe  
Andrea Graham  
Connie & Stanley Grayson  
Shelley & Bill Greggs  
Gulf Breeze Cottages  
Kris & Bruce Gurall  
Jean & John Halligan  
Carolyn Harper  
Harrells LLC  
Gilbert Harris  
Henry Harrison  
Brenda & Marty Harry  
Kris & Jim Harvey  
Betsy & Taylor Hay  
Carol & Adair Heath  
Megan Hebbeler  
Mark Henry  
Mal Hepburn  
Susan Hicks  
Dean Hill  
Patricia Hinkel  
Jonathan Hudson  
Island Management  
Dale Reiss & Jerry King  
John Grey Painting Ltd Co  
Nancy Johnson  
Julia Zepkowski  
Memorial Foundation  
Carol Kane  
Kathleen & Joseph Kelley  
Barbara Kerscher  
Mary Jane & Dan Keys  
Liz & Kent Kienholz  
Ann & Patrick Kingman

Patricia Kinniburgh  
Eileen & Merle Kionaas  
Marilyn & Frank Klepacki  
Diane & Ray Knight  
Rosemarie Kraus  
Jennifer & Todd Ladda  
Ginny Lasco  
Law Office of Janet Strickland  
Jack Lee  
Lee County Bar Association  
Foundation  
Marcia Leslie  
Edina & Alan Lessack  
Pam Lessiter  
Virginia Letourneau  
Marilyn Lewis  
LexisNexis Risk  
Eileen & Peter Litwin  
Patricia & Philip Love  
Nora Lynch  
Maguire Keches  
Projects Foundation  
Jane & Paul Majeski  
Mel Manker  
Holly & Don Manning  
Leanne & Todd Marcum  
Joyce & Joe Marquette  
Barbara & Alan Marti  
Mark Masini  
Carol & Greg Matre  
Lisa Mauer  
Jill & Dan McCormack  
Sandy & Gary McKnight  
Edward McManus  
Elissa Karasin-Samet &  
Michael Samet  
Barbara & William Millar  
Michelle & Chris Millard  
Luke Miller  
Mary & Mike Miller  
Robert Moore  
Leon & Fran Morsillo  
Rebekah & Bob Moyle  
Mudbugs Cajun Kitchen LLC  
Sharon Mulder  
Albert Nagel  
Kathy & John Namovic  
Nancy S. Dixon Estate  
Linda Newell  
Peggy & John Nichols  
Nike  
Pam & Bob Norton  
Patrick O'Daniel  
Julie & Tim O'Neill  
Pfeifer Realty Group LLC  
Pine Cove Partners  
Suzanne Pizzitola  
Kathy & David Platt  
Richard Pontynen  
Barbara Powers  
Richard Rabbideau  
Ann & Brewster Rawls  
Eileen Kehoe & Bud Reinhold  
Mary Anne & Bob Rennebohm  
Deborah Renton  
Joyce & Don Rice  
Kathy Rice  
Krista Richman  
Michael Ross  
Royal Shell Real Estate  
Maureen & Gary Saage  
Trish & Chad Salahshour  
Jennifer Schiff  
Patrice & Michael Schmidt  
Schwarz Family Foundation  
Laurie Shannon  
Toni & Brett Shannon

Susan Sheridan  
Sharon Smith-Purdy  
Southeast Turf Partners  
Ross Spencer  
Linda & Hank Spire  
Patricia Strong  
Pamela Stumph  
Suncatchers Dream  
Audrey & Craig Sutherland  
Trevor Swartz  
Kyle Sweet  
Susan & Dean Taylor Scherbel  
The Grog Shop  
The Jay & Judie Elliott Charitable Fund  
The Robert Rauschenberg Foundation  
Thermo Fisher SC Corp  
Cathie & Bill Thiede  
Ellen & Sandy Trevor  
UHG  
Betty & Bob VanTassel  
Gerry & Rod Verblauw  
Cathy & Joel Vogel  
Scott Waterhouse  
Wean Foundation  
Jennifer Wentworth  
Wescoturf Inc  
Diane Wien  
Ann-Marie Wildman  
Katrina & Dan Wilhelm  
Deb & Lee Wilson  
Elechia & Don Wimbish  
Lisa Wood  
Joyce Yaffee  
Yolo Watersports  
Zebis IT Essentials  
Diane & Fred Zimmer

#### SUPPORTERS

Anonymous (6)  
Dawn & Benjamin Adams  
Judy & Tom Addison  
Anne Air  
Cristy Altaro  
Teresa & Richard Amann  
Karen, Anthony & John Annoni  
Archer Foundation  
Ashton Kirchner Group of  
Keller Williams Realty  
Sandra & Charles Bennett  
Libby & Carl Bergquist  
James Berner  
Elizabeth Bishop  
Blackrock  
Linda Blankenbaker  
Shirley Bohnert  
Marnie Bokelman  
Bonfire Fundraiser  
Anne Marie Bouche  
Ann Brady  
Christina & John Brennan  
Nancy & Bob Brooks  
Anne Magoun & Bruce Borchardt  
Coral & James Bryja  
Regina & Mark Budris  
Judy Burton  
Fran Cameron  
Paula & Marco Cardamone  
Holly Carlson  
CARY Industries  
Lisa Ross & Charles Eby  
William Chernelich  
Becky & Mickey Ciriello  
Ann & Roger Cogswell  
Aaron Cohen  
Marilyn & Vince Conoscenti  
John Cook  
Judith & Donald Cook

Christina Struckmeyer &  
Corrado Federico  
Mary Ann Cowart  
Howard Cox  
Dana & Scott Crater  
Marsha & Claude Crawford  
Dan Hahn Custom Builders  
Sandra Danussi  
Beth & Richard Davis  
Dan Dias  
Dise Wealth Management  
Ruth & Tom Dobb  
Laura Dominici  
Margaret & Gregory Donohue  
Samantha Drexelius  
Lynda Dunham  
Michael Elledge  
Margaret & John Erling  
Linda & David Essig  
Rita & Clay Ewell  
Rosemarie & Jim Flaherty  
Pam & John Fridlington  
Cassie & Paul Gaenger  
Ann & John Gee  
Carol & Ken Gertsen  
Kaye & Kenneth Gnazzo  
Suzanne & Frederick Gobel  
Ira Grasgreen  
Jennifer Taschner-Blurton &  
Greg Blurton  
Merry Grissom  
Christina & James Grote  
Jessica Guerrieri  
Janet & John Gworek  
Michelle Habash  
Ben Halpern-Meekin  
Linda & John Harvey  
Brett Harwood  
Stephen Hawes  
Mark Heiman  
Brandon Hemmelgarn  
Jane & John Henshaw  
John Hogan  
Colleen Horner  
Horvath Lake Fountains  
Sandra Hotaling  
Jerry Howard  
Ann Humphrey  
Margaret Hupfeldt  
Island Inn  
Adam Jensen  
Jane Jensen  
Jewish Federation Foundation  
Karen & Buzz Jones  
Katie Sikorski & Joseph Caruso  
Margie & Tom Juedes  
Kelly Junkins  
Carol & Lance Kann  
Mary Ann Kanzius  
Kinzie Island Homeowner's Assoc  
Robin Kirk  
Elfriede Koelmel  
Nancy Krahmer  
Judith La Gorce Bright  
Michelle & Thomas Lakocy  
Ann & Paul Lawrence  
Lee County BOCC Sports Development  
Elizabeth Litchfield  
Lori & Randy Livingston  
Susan Lloyd  
Mr. & Mrs. Loes  
Sharon Lynn  
Deborah Mackelcan  
Joanne Madden  
Elizabeth Mason  
Sandra & Nicholas Mattoni  
Janet McBee



# amazing **donors** CONTINUED

Pinet & Jim McBride  
Cassandra McDowell  
Mary Jo Mersol-Barg  
Kate Mesaros  
Microsoft  
Julie Mikus  
Janice Millholland  
Judy & Sandy Montclare  
Rosa Moody  
Carol & Edward Mosel  
Eric Moser  
Barbara & Jimmy Mulka  
Sally Neff  
Gwen & John Newman  
Cecilia & Bjorn Olsson  
Martha & Richard Ordeman  
David Osborne  
Linda & Bob Osburn  
Carole & Don Owen  
Bob Owens  
George Pain  
Marianne Pasqual  
Stephanie & Harold Payson  
Patricia Perell  
Jennifer Pinder  
John Pinkos  
Pittsburgh Foundation  
Poggy Baiters  
Priscilla's of Sanibel  
Mike Puma  
Linda Quella  
Mark Raab  
Kathleen & David Reape  
Yolonda & Mike Reardon  
Ann Hathaway & Robin Reed  
Jodi Refosco  
Ed Riddlehoover  
Suzie & Bill Riley  
David Roach  
Mark Roberts  
Susan Rosenthal  
Rosier Insurance  
Yevgeniya Ross  
Susan & Fred Ryckman  
Sandry & Wersan Family Fund  
Ann Smith & Sandy Shepard  
Sanibel-Captiva  
Lions Charities, Inc  
Marie-Claude Schauer  
Will Schlosser  
Cindy Schneeman  
Dick Schreck  
Seven Rivers Medical &  
Educational Foundation  
Ann & Bill Shanley  
Elizabeth Shelley  
Robin Siegel  
Andrew Simmons Jr  
Joel Skagerberg  
Shari Roehl & Ley Smith  
Fay & John Snyder  
Juanita Spanogle  
Joann & Dennis Stehr  
Keally & Mark Stroud  
Dr. A.G. Khakee &  
The Sunrise Foundation  
Gertrude Swain  
Heather Szymendera  
Lisa Taisto  
Tracey & Maurice Tenney  
The Archer Foundation  
Andrea Thompson  
Margaret & Michael Toomey

Carol & Scott Townsley  
Nancy Traylor  
Turf Dietician Inc  
Jane & Bill Valenta  
Karen Verner  
Margaret Warzecha  
Carol Watkins  
Jennifer Weber  
Winifred West  
Bernard Wicklein  
Wendi Williams  
Marion & Robert Wise  
Elaine & Hayes Worley  
Nancy DiMuzio &  
Steve Youngstown  
Theresa & Glenn Zakany

## **FRIENDS**

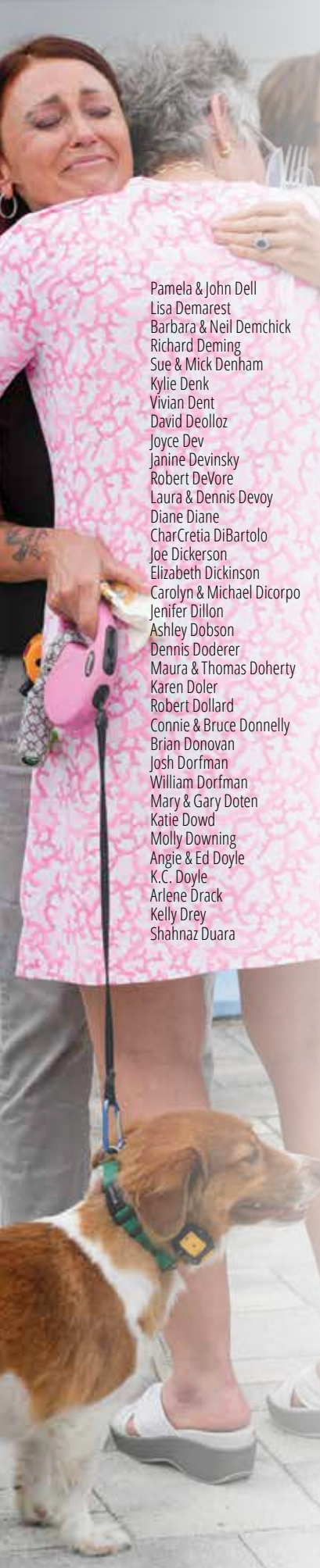
Anonymous (16)  
Acapella Technologies  
Kimberly & David Ackley  
Sheena Acosta  
Christina Albert  
Kendra Albert  
Deidre Albino  
Margarita & Gustavo Alfonso  
Stacy Allee  
Carolyn & James Allen  
Zachary Allen  
Altair Advisers LLC  
Jennifer Altergott  
Janice & Richard Amarosa  
Patricia & Samuel Amato  
Amazon Smile  
Nancy Amrich  
Helen & Ronald Amy  
Amejo Amyot  
Loretta & Mark Anderson  
Suzanne Anderson  
Leslie & Joe Anding  
Joyce Andrew  
Vanessa Angelo  
Rebecca Angler  
Bonnissue Angulas  
Adele Anish  
Kim Appel  
Gary & Christine Armbrecht  
Alan Armstrong  
Andrew Arnold  
Drew Arnold  
Mr. & Mrs. Arnould  
Patty Arpin  
Matt Asen  
Joyce & Mahmud Assar  
Jarilyn Auger  
Gail Migliorini & James Babb  
Marsha & Gary Bach  
Jean & Dennis Baer  
Conrad Bahlke  
Mary Lou Bailey  
Bailey-Matthews Shell Museum  
Carol Baker  
Roger Baker  
Sylvia & Lawrence Baker  
Teresa Baker  
Terry & Mike Baldwin  
Beverly & Armand Ball  
Nancy & John Bando blu  
Emily Banks  
Taylor Banks  
Grant Barber  
Judy & John Barbieri  
Nancy & Timothy Baroni

Shirley Barron  
Chelsea Barta  
Louise & James Bartkowski  
Karen Bartlett  
Nina Bastian  
Gillian & David Bath  
Alison Battersby  
Isabelle Bauer  
Cynthia Bauman  
Rebecca Bauter  
Alison Bauter Engel  
Nate Bear  
Malissa Behm  
Courtney Beisel  
Austin Bell  
Judy & Robert Bellistri  
Loren J. Bennett Jr  
Sara & Bob Berendt  
Doris Berg  
Timothy Bergen  
Mary & Tim Berger  
Susan Bernard  
Scott Bernardo  
Bradford Berry  
Lesley Bettenhausen  
Roberta Bewsey  
Emily Beyer  
Christina Biart  
Janis Bice  
Kathryn Bielefeld  
Maria Bielow  
Sharon & Ulysses Biffoni  
Connie Bischoff  
Adam Bishop  
Ms. Bitter  
Jane Bittner  
Blackbaud, Inc  
Ellen Blackstone  
Nancy Blackwell  
Amy Blanco  
Janet & William Blank  
Buck Blessing  
Robert Bloomer  
Jennifer Blount  
Janine & John Boardman  
Rachel Bock  
Wendy Boisseau  
Alicia Bokalders  
Mary Jane & Tom Bolon  
Lynn Bolz  
Marjorie Bonhayag  
Susan Bonnell  
Timothy Bontecou  
Cindy Borgmann  
Spencer Borneman  
ZB Bornemann  
Jessica Boro  
David Bottomley  
James Boughton  
Randall Boyce  
Donna Boyle  
Odette Brabec  
Dina Brady  
Mary Ann & Joseph Brady  
Carl Brandt  
Luisa & Andrew Bratcher  
David Braun  
Amy Bravo  
Sue & Bill Breda  
Delia Brennan  
Martha Brennan  
Monti Brewer  
Keith Brewster

Catherine & John Bridge  
Ann & Cliff Bridges  
Julie Brokaw  
Ellen & Michael Broschart  
Betty Brown  
Christine Brown  
Janet Brown  
Victoria Brown  
Jill & Dave Bugby  
Debra Bullock  
Christine Bultmann  
Hannah Bundy  
Victoria & William Burch  
Ken Burgemer  
Pam & Keith Burke  
Karen Burkett  
Linda & Jim Burkhardt  
Trudy & James Burkholder  
Ronald Burnham  
Don Burns  
Ryan Burrow  
Jodie Butler  
Adam Butman  
Mame & Bob Byrne  
Elizabeth Cabrera  
John Cahill  
Calamondin Cottage  
Sandra Calkins  
Marie & Dennis Callahan  
Annie Campbell  
Geri & John Campbell  
Jeff Campione  
Anne Cannon  
Christina Capiola  
Annie Cappelli  
Dawn Carey  
Kathi Carey  
Mary Schultz & Carl Neumann  
Kevin Carroll  
Jane & Larry Carter  
Jean Carter  
Elizabeth Carter Grissom  
Elisabeth & Joseph Casario  
Annette Cassells Wilson  
Chloe Holden & Cassie Schroeder  
James Casson  
Gabrielle Castaneda  
Casting Whimsy LLC  
Jennifer Cavan  
Patricia Caviola  
Jay Caywood  
Barbara & Renny Challoner  
Rick Chambers  
Robin Chandler  
Jennifer Reid & Charles Krause  
Mike Chasteen  
Nancy Chongoushian  
Molly Chrisman  
Christine Martin Impact  
Trial Consulting  
Nick Christy  
Leslie Cimino  
Gloria Cintron  
Rose & Peter Cipriano  
Jennifer & Dax Cissell  
Cameron Cizek  
Judith Claire  
Mary Clark  
Shelly Clark  
Casey & Steve Claypool  
Maryann Clayton  
Nancy Cleaveland  
Rosemary Clemens

CME Group  
Coco y Cabana LLC  
Coconut Point Mall  
Lois Codair  
Patricia Cohen  
Rachel Cohen  
Sandy Cold  
Meredith Colleran  
Denise Collins  
Francoise Colpron  
Valerie Colville Nierenberg  
Vera Comer  
Courtney Compagnoni  
Mary Anne & Larry Condit  
Lynn Congdon  
Betty Anne & Thomas Conley  
Michael Conn  
Andrea Conners  
Kevin Connerty  
Carol Ann & Francis Conway  
Barbara Joy & Tom Cooley  
Sally Cooper  
Paul Corliss  
Laurie Correia  
Diane & Gregory Cortese  
Nadine Costenbader  
Michelle & Salvatore Cottone  
Country Club of Coral Springs  
Mariel & Brennan Courtwright  
Nilda Coxey  
Jacque & Steve Cramer  
Sue Crooks  
Susan Crosson  
Suzie & Mike Cullen  
Christy Curtis  
Joan Cusano  
Chang & Stephen Custer  
Carol & John Cutrone  
Grant Cutter  
Lisa Dahl  
Sandra Dalbec  
Lev Dalke  
Jaclyn Damato  
Patricia Damon  
Daniel Hagerman Foundation  
Anne Dillon & Daniel Wexler  
Linda & John Danner  
James D'Arcy  
Lisa Davee  
Cassidy David  
Patricia David  
Patricia Davidson  
Sally Davies  
Debra & Charles Davis  
Eileen Davis  
James Davis  
Jay Davis  
Maureen Davis  
Sally Davis  
Tye Davis  
Barbara & Bradley Dawson  
Sandy Dawson  
Justin De Vesine  
Hermanus De Vries  
Barbara & Jeffrey Dean  
Dottie Deans  
Kristin DeCarolis  
Murray Decock  
Tracy Decock  
Rose Marie Dedonato  
Shelby Deering  
Elise & Robert Degen  
Cynthia Dehlin





Pamela & John Dell  
Lisa Demarest  
Barbara & Neil Demchick  
Richard Deming  
Sue & Mick Denham  
Kylie Denk  
Vivian Dent  
David Deoloz  
Joyce Dev  
Janine Devinsky  
Robert DeVore  
Laura & Dennis Devoy  
Diane Diane  
CharCretia DiBartolo  
Joe Dickerson  
Elizabeth Dickinson  
Carolyn & Michael Dicorpo  
Jenifer Dillon  
Ashley Dobson  
Dennis Doderer  
Maura & Thomas Doherty  
Karen Doler  
Robert Dollard  
Connie & Bruce Donnelly  
Brian Donovan  
Josh Dorfman  
William Dorfman  
Mary & Gary Doten  
Katie Dowd  
Molly Downing  
Angie & Ed Doyle  
K.C. Doyle  
Arlene Drack  
Kelly Drey  
Shahnaz Duara

Doug Dumond  
Stephanie Durman  
Robin Dutcher  
Jordan Duthie  
Lisa Dyas  
Gretchen Dykstra  
Maria Easterling  
Clara Echerer  
EDF-RE  
Edison Mortgage Services  
Melissa Edwards  
Edwards Lifesciences Foundation  
Barbara & James Egan  
Melanie Egan  
Laura Eide  
Jeannie & Ronald Ellington  
Betty Rebhorn &  
Elston Van Steenburgh  
Kristen Emerson  
Dean Engdahl  
Adam Engelhardt  
Elizabeth Errickson  
Deborah & Tim Ervin  
Mandy Erway  
Patricia Eskeland  
Claudia Espinoza  
Maria Espinoza  
Teresa Espinoza  
Janet & Norm Essey  
Jack Evans  
Jan Eversole  
Dolly Farrell  
Therese & James Faulconbridge  
Denise Fauntleroy  
Patricia & Donald Fay  
Elaine Feddersen  
Nika Feeney  
Ellen & Michael Feingold  
Sally Fekety  
Joyce Fennell  
Mary Fesq  
Geraldine & John Fiedler  
Sibley Fillette  
Linda & Chris Fiora  
Barbara & Michael Fiore  
Louise & Gerry Fitzgerald  
Andrea & David Fleet  
Gaye & Thomas Fleming  
Ginny Fleming  
Jesse Fleming  
Catherine Flint  
Melanie Foley  
Joe Fore  
Kathryn Forslund  
Karen Foster  
Dorothy Fournier  
JoAnne & Bernie Fowler  
Lin & JR Fox  
Patricia Fox  
Linda Freda  
Anna Frederiksen-Cherry  
Karen & Ron Freed  
Monica Freeman  
Anna Frentzen  
Kinzie Frey  
Zachary Frey  
Megan Friedlander  
Carol Friend  
Jill Frumin  
Suzanne & Michael Fuller  
Brennan Fulton

G to Z Turf Services  
Laura Gaber  
Charita Gabert  
Shannon & Gary Gafgen  
Kathleen Gagliardi  
Jane & Peter Gaines  
Mary Gale  
Laura & Tyler Gales  
Janice Gammill  
Grace Gardner  
Kendra Garrouette  
Kelli Garwood  
Margot Jean Cusack & Gary Long  
Richard Gates  
Gen Digital  
Bridget Gendron  
Emily Gerber  
Patricia Gestewitz  
Carol & Ron Gestwicki  
James Gettys  
Karen & David Getzy  
Zachary Gibbons  
Marjie Gilliam  
Linda & Tim Gilbert  
Laura Gillespie  
David Gillette  
Bettye Gillman  
Schuyler Gillispie  
Richard Ginkowski  
Anthony Giordano  
Mardi Glenn  
Chris Godwin  
Prudence Goforth  
Alyssa Goin  
David Goldberger  
Karen Goldsmith  
Maggie Goldsmith  
Jennifer & Joshua Goldspiel  
Rudolf Golsch  
Ginna & Bruce Goodall  
Frances Goodman  
Nancy & James Goodwin  
Janie & Mason Goss  
Justin Gosselin  
Pat & David Goulait  
Kevin Gould  
Michael Grabill  
Brian Grabow  
Burt Grad  
Dottie & Tom Gray  
Lisa Greco  
Amber Green  
Gayle Green  
Jan Greenberg  
Stephanie Greene  
Beth Greenfield-Mandler  
Nicole Gremmo  
Phyllis Gresham  
Patricia & John Gries  
Stephanie Griffin  
Sue Grimes  
Lynn Grimshaw  
Stan Grogg  
Colleen Gross  
Karen & Wayne Gross  
Amy Gunther  
Bonnie Gwin  
Stephen Haas  
Claire & Robert Hackett  
Shah Hadjebi  
Krystina Hadra  
Jill Haft  
Charles Hagen  
Ree DeDonato & Hal Espo  
Marcia & Doug Hale  
Bonne & David Hall  
Jonathan Hall

Julie Hall  
Sherry & Neal Halleran  
Jacky Ham  
Patricia & Glenn Hammer  
Jen Hansen  
Doris Hardy  
Bette Harig  
Brook Harmon  
Kathryn Harmon  
Marcia & Mike Harms  
Geri Harrand  
Sheila & Tom Harris  
Shirley & Steven Harris  
Susan Kehne & Harry Brown  
Sharon Kuznetsov & Harry Hoesel  
Mary Hartwig  
Ellen Harvey  
Linda Harvey  
Erin Hassel  
Janet Hathaway  
Cheryl Haugen  
James Haught  
Jason Hausle  
Carol Hawkins  
Meredith Hawkins  
Betty & Dennis Hayes  
Scott Hayes  
Jeff Hayward  
Eileen & Calvin Hazell  
HCA Healthcare Foundation  
Barbara Heady  
Teresa Hechmer Anzalone  
Susan Hecht  
Tim Hefner  
Lisa & Chris Heidrick  
Janet Heindl  
Candace Heise  
Deborah Helck  
Roberta Heller  
Mr. & Mrs. Hemingway  
Dorothy Hemming  
Annette & Ed Hendrick  
James Henne  
Amy & Michael Herd  
Ann Herington  
Stephen Herring  
Jim Hershner  
Gayle Hewitt  
Debi Hibben  
Sandra Hibbs  
Barbara Hickey  
Damon Hickey  
Hays Hill  
Linda Hines  
Thomas Hoekstra  
Ellen & Thomas Hoeltgen  
Barbara & James Hoffman  
Cynthia Hoisington  
Mary & Ed Holden  
Alyson Holdsworth  
Amber Holeywinski  
Heather Holland  
Lynn Hoops  
Beverly Hornstein  
Steven Horwitz  
Carol House  
Karen Howard  
Mikalen Howe  
Mary Jane Hromnak  
Ellen & Kyle Hublitz  
Nancy & Dan Hudson  
Jonathan Hunt  
Sharon Hunt  
Lynn Hunter  
James Huntsman  
Tina Hurst  
Jensen Hussey

Gail Hutcheson  
Rowena Hutchins  
Jane Hutson  
Pat Hyde  
Valentina Iadipaolo  
IAT Insurance Group, Inc  
David Iglehart  
Jeannine Inda  
Chrys Iorio  
IQVIA  
Island Therapy Services  
of Sanibel LLC  
Barbara Jablonski  
Marian Jablonski  
Bobbie McGlynn & Jack Stahl  
Cynthia & David Jacob  
Lisa Jacob  
Karen Jacobson  
Meredith Jacobson  
Margo Jeanchild  
Susan & James Jefferson  
Linda & Greg Jennings  
Mary Jennings  
Patty & Bill Jensen  
Ellen Kraft & John Keimel  
Sue Paul Tukey & John Tukey  
Alison Johnson  
Elizabeth Johnson  
Erica Johnson  
Melissa Johnson  
William Johnson  
Jane Johnston  
Nicholas Jolley  
Jennifer Jones  
Melissa & Scott Jones  
Tamara Jones  
Thomas Judson  
Barbara & James Kallman  
Kirsten Kaltenmark  
Sandra & Allen Kanapesky  
Margaret Kane  
Kathryn Brintnall Charitable Fund  
Birdie Newman Katz  
Eileen Katz  
Douglas Katzer  
Susan Keating  
Katherine Keeney  
Janell Keider  
Jinny Kelby  
Grant Kelley  
John Kelley  
Andrea Kelly  
Kathleen Kelly  
Tom Kelly  
Dewayne Kendall  
Alison Kenney  
Joan & Robert Kent  
Lyn & Bob Kern  
Vicki & Harris Kerr  
Julie Ketterer  
Nik Khakee  
Jane Kiel  
Kimball Family  
Katherine Kimmerlein  
Kaitlin Kino  
Sue Kirchner  
Kirchner Contracting  
Angie & Aaron Kirkman  
Julianne Kirkpatrick  
Gayle Kirsten  
Margie & Mark Klein  
Shirley & Theodore Klinka  
Helaine Knapp  
Naomi Knoble  
Kelly Knox  
James Kobak  
Jeffrey Koehler



# amazing **donors** CONTINUED

Jason Kokotoff  
Lisa & William Koontz  
Taylor Korty  
Christine Koziol  
Linda Kozlowski  
Trudy Kramer  
Valerie Kramer  
Susan & Bo Kriegshauser  
Kate Krival  
Joyce & Charles Krivenko  
Eileen Krivokopich  
Jennifer Kron  
Arlene & Robert Kuiken  
Heidi Kurtz  
Michelle Kypriss  
Jonathan Labbe  
Mr. & Mrs. LaFond  
Virginia Lake  
Kathy & Ken LaMotte  
Liz & Jim Lampe  
Barb & George Lampros  
Samantha Landry Bearce  
Kendall Lane  
Kathleen Lange  
Heather LaPlante  
Sally Larson  
Sharon Lavin & Larry Neuman  
Pat & Bill Larsen  
Mary & Jim LaVelle  
A.N. Lawrence  
Peter Lawrence  
Roberta Layton  
Elizabeth Leathery  
Andrea & Jeffrey Ledis  
Julia Lee  
Lee Health  
Judith Leedy  
Patricia Legg  
Sandee & Rich Leibson  
David Leidel  
Jane Leidel  
Cynthia Britton & Leland Thaete  
Julie & Jeff Leshay  
Leslie Management  
Pamela Lester  
Darla Letourneau  
Lawrence Leventhal  
Barbara Levine  
Alan Lewis  
Cathie Lewis  
Judi & David Lewis  
Mary & William L'Hotta  
Liberty Mutual  
Russ Liebetau  
Natasha Lightfoot  
Angie Lindberg  
Ann & Lennart Lindberg  
Jane Lindquist  
Kathy Lindsley  
Lynda & Daniel Lion  
Charles Livengood  
Antonio Llanos  
Carol Lloyd  
Olivia Lohnes  
Artemis Lonan  
Diane Lonergan  
Julie & Daniel Long  
Michael Long  
Brittany Lorenzi  
Gloria Lorenzo  
Deborah & Claudia Loughney  
Katie Lovejoy  
Rene & Kerry Lowdermilk

LR Long Anesthesia Service  
Sherri Luba  
Cynthia & Carl Lucci  
Courtney Lucien  
Marilyn & Ted Lucien  
Mary Ellen Ludmerer  
Sue & Marek Ludwig  
Katherine Luers  
Annie Luke  
Maddie Lund  
William Lutz  
Dorothy & James Lynch  
Gale & Jim Lynch  
Elissa Vanaver & Roman Lyskowski  
Ina & Alex MacKenzie  
Michelle Maclay  
Patricia Maguire McKeon  
Jill & Mickey Maita  
Nelia & Kambiz Makoui  
Kristin Malone  
Danielle Mancinelli  
Hannah Manley  
Meribah Mansfield  
Robert Mapes  
Markdan Inc  
Alyson Markham  
Peter Markusch  
Kylan Marsh  
Anita & Robert Marshall  
Jill Martin  
Lauri Martin  
Cesar Martinez  
Allie Mason  
Cynthia & John Mason  
Julie Mason  
Shirley & John Masuka  
Susan & Arun Mathur  
Kristina Matteson  
Shannen Hayes & Matthew Reed  
Elisabeth Matz  
Judith Mayer  
Cathy Mayfield  
Jill & Paul McArthur  
Angela McBride  
Margaret McCafferty  
Margaret & Alan McCall  
Jane McCammon  
Deborah McCartney  
Carolyn McClaine  
Sally & Peter McClellan  
Nancy & Dean McCumber  
Ann McDonald  
Cathy & Bob McDonald  
Kay McDonald  
Anne McDowell  
Barry McErlean  
Rachel McGarrigle  
Karen McGovern  
Virginia & Andrew McGowan  
Nicole & Jimmy McHale  
Thomas McHale  
Janie McKenzie  
Amy McKinnell  
Dana McKinney  
Sue & Larry McMahan  
Maura McMahon-Primus  
Pauline McManus  
Carol McRae  
William McReavy  
Janet McRoberts  
Malcolm McRoberts  
Jennifer Mechem  
Carl Meier

Diane Meier  
Gary Meltz  
Julie Memmelo  
Alexander Messer  
Ed Meyer  
Gail Migliorini  
John Migliorisi  
Amy Miller  
Janice & Michael Miller  
Jennifer & Patrick Miller  
John Miller  
Susan Miller  
Corrinne Mills  
Michelle Mills  
Alicia Milner  
Laura Minns  
Norman Minsky  
Roxanna Miyares  
Gertrude Moffat  
Shakil Mohammed  
Nancy Moon  
Jacqueline Mooney  
Cathy Moore  
Judy Moore  
Peg Moran  
Cameron Morelock  
Bridget & Bob Morgan  
Denise Morgan  
Kate Morneau  
Lisa Birnbaum & Donald Morrill  
Mary & Stephen Morris  
Mary & Scott Morrison  
Jill Janda & Mort Kanner  
Cynthia Moser  
Alexis & Katie Mosquera  
Karen & Geoffrey Moss  
Nancy Mullens  
Terri Mullings  
Daniel Munro  
Rebecca Munro Horning  
Margaret Murdock  
Catherine Murphy  
Catherine & Thomas Murphy  
Michael Murphy  
Shannon Murphy  
Karen Murtagh  
Jennifer Musolf  
Carole Myer  
Ellen Myers  
Johanna Naama  
John Nader  
Melynee Naegele  
Bob Nahm  
Helene & Robert Nahm  
Erin Nash  
Rebecca & Norman Neher  
Ann-Christine Nelson  
Deb Nelson  
Erica Nelson  
Sharon & Jerry Nelson  
Cynthia Nestel  
Susan Nestler  
Jeri Netter Henoch  
Laura Neumann  
Carol & Michael Newhouse  
Gay & Jerry Nichols  
Jennifer & David Nichols  
Marilyn & Randall Niehoff  
Craig Nies  
Marge & Fred Nordstrom  
Julie Norris  
Melissa Norwood  
Mary & Leonard Novotny

Paul Nuciforo  
Joanne Nuzzo  
Sarah O'Brien  
Cathy & Bruce Odlaug  
Ann O'Donnell  
Diane O'Kelly  
Jane Okrasinski  
Jane Olin  
Sarah Olin  
Barbara Jo & Thomas Olson  
Regen O'Malley  
Alicia & Ryan Orgera  
Nancy Orr  
Susan & Ship Orr  
Ronald Otte  
Frank Owen  
Paul Pagley  
Susan Paladino  
Faith Palin  
Laura Palmer  
Chris & Lou Pandolfe  
Marianita Pardo  
Elaine & Tony Parente  
Phillip Parker  
Kelly Parnell  
Karen Pati  
Marilyn Patterson  
Michael Patterson  
Kathy & Bob Paul  
Linda & Barry Pearson  
Lisa J. Pearson  
Sarah Peck  
Gayle Pence  
Whitney Pennington  
Donna Pennock  
Brett Perala  
Mary Alice Perkins  
Holly Perryman  
Judith Petefish  
Denise Petersen  
Russ Petrocine  
Sandra Pettersen  
Ann Pettigrew  
Nancy Phillips  
Phocas Family Foundation  
Angelina Pichardo  
Violet Pickel  
Gail & Phil Pilibosian  
Pioneer Valley Urology  
Amy Plankenhorn  
Gary Pleafka  
Katherine Plough  
Heidi Polak  
Mike Polk  
Gail & Jeremy Pool  
Cyndy & Tom Poole  
Jennifer Poole  
Philomena & John Poole  
Curtis Porcello  
Karen Porcello  
Patricia & James Poshek  
Darrell Potter  
Marjorie & Andrew Potter  
Larry Powell  
Frances & Richard Powers  
John Prann  
Beth Prather  
Rosemarie Pratts  
Joanne & Paul Prestia  
Allyson Preston  
Carmina Price  
Cynthia & Patrick Price  
Mary Price

Victoria Price  
Virginia Price  
Jennifer Puryear  
Keri Pyse  
Angela Qin  
Lynne & Steven Quoy  
Kristen Quoy-Hain  
Catherine & Michael Raab  
Carol Rabanus  
Irene & C.W. Raber  
LaShelle Rabold  
Erica Rallo  
Margaret Clark & Ralph Silberman  
Janet Ralston  
Paula Ramm  
Ethan Rampersaud  
Jane & Chuck Ramseth  
Helen & Robert Ramsey  
Lisa Rand  
Ben Raschke  
Deborah Ratner  
Marianne & Paul Ravenna  
Debra & David Ray  
Rebecca Reardon  
Ken Reeder  
Shelly Regan  
Renee Reid  
Karen Reinartz  
Leon Retzlaff  
Cynthia & Peter Reuling  
Kim Reveil  
Dolores & Hernan Reyes  
Alison Rials  
Leslie Rice  
Louis Rich  
Kathleen Van Kampen & Richard Bone  
Winifred Merritt & Richard Fox  
Bruce Richards  
Nancy Richards  
Vanessa Richards  
Elizabeth Rickart  
Barbara Beran &  
Rickert Shewring  
Nicole Ridberg  
Steven Rieth  
Allison Riggs  
Linda & James Riggs  
Barbara Rintala  
Denice & John Risberg  
Christine Roach  
Cindy & Tim Roach  
Ariel Hoover & Robert Moore  
Kimberly Roberts  
Kim Robertson  
Joseph Robinson  
Mary & Carlos Roche  
Peggy Rochette  
Allison Rockey  
Nicole Rokos  
Judah Ronch  
Carol Rosenberg  
Glenna Rosenberg  
Ryan Rosenberg  
Susan Rosenstiel  
John Ross  
Cristian Rossel  
Jennifer Rota  
Barry Roth  
Helene Roth  
Jeffrey Roth  
Elizabeth Roussil  
Jacqueline & John Rozga  
MaDonna Ruane



Louis Rubenstein  
 Matthew Ruberry  
 Karen Rudisill  
 Ivan Ruiz  
 Emily Ruth  
 Sally & Allan Sacks  
 Leila Sadat  
 Valerie Sadd  
 Katherine Salerno  
 Regina & Harry Salis  
 Janet Salsman  
 Mr. & Mrs. Sanchez  
 Sancon LLC  
 Mary Sanfilippo  
 Jayne Sanftleben  
 Kandi Sanger  
 Sanibel & Captiva Islands  
 Assoc of Realtors, Inc  
 Sanibel Crown Beach LLC  
 Sanibel Shells Co  
 Sanibel Skin Spa  
 Sanybel's Finest  
 Laurie Sapp  
 Rene & Jeff Savarise  
 Jonathan Savona  
 Elaine & Robert Schaeffer  
 Lynette Scharlach  
 David Scheiber  
 Philip & Carol Scheiber  
 Thomas Schelble  
 Shirley Schiffman  
 Katherine Schmeckpeper  
 Michiale Schneider  
 Phyllis Schneider  
 Kimberly Schneiderman  
 George Schoenfeld  
 Sarah Schofield Wimberley  
 Larry Schopp  
 Dan Schowengerdt  
 Debra Schreiber  
 Philip Schreiber  
 Marcia Schultz  
 Shirley Schulz  
 Anne Schwenzfeier  
 Ted Schwerzler  
 Teresa Scilipote  
 Julie Scott  
 Amy Scrobel  
 Ann Scully  
 Laura Searcy  
 Karen & David Searles  
 Ellen Segal  
 Linda Seifert  
 Brian Seligman  
 Lynn Selmants  
 Kyle Sewell  
 Shady Rooster  
 Bill Shashaty  
 Michelle Shaw

Catherine & Kevin Shea  
 Marjorie Shiekman  
 Barbara Shingleton  
 Jon Shoham  
 Ryan Siddens  
 Vera & Eric Siefert  
 Peggy & Frank Siegel  
 Cinda & Dale Silgmueeller  
 Mary Silva Doctor  
 Jill Silvis  
 Elizabeth & John Simler  
 Samesh Singh  
 Cheryl & Leo Sioris  
 Clare Sipprelle  
 Joyce & Joe Sirkin  
 Nancy Skilton  
 Irene & Leon Skolnick  
 Karen Slaska  
 Patricia Slater  
 Cathy & Jay Sleiter  
 Melissa Smilie  
 Al Smith  
 Caroline Smith  
 Donna Smith  
 Gale Newton & James Smith  
 Gerald Smith  
 Jamie Smith  
 Jerry Smith  
 Josephine & Ronald Smith  
 Kasie Smith  
 Margaret Smith  
 Paul Smith  
 Jackie Smith-Nielsen  
 Margaret & William Smythe  
 Bonnie Sneed  
 Britta & Lars Soderqvist  
 Maria Solares  
 Barbara Solberg  
 Megan Soller  
 Joan & David Southworth  
 Marsha Souza  
 Allen Sparks  
 Sylvia & Gregory Spaulding  
 Cathy Spencer  
 Cameron & Mark Sperry  
 Spohaners Family  
 Monika & Peter Sprague  
 Gretchen & Halsey Spruance  
 Paul Stallings  
 Suzann Stamps  
 Jeanene Stephens  
 Drew Stern  
 Mary Stewart  
 Revonda Stewart  
 M.C. Stezler  
 Elizabeth & Charles Stone  
 Timothy Stranges  
 Russell Straub

D.S. Strunk  
 Mary Stubbs  
 Gretchen Sullivan  
 Julia Sumkin  
 Maggie & Tom Surgener  
 Lakshmi Suryadevara  
 Lisa Sutherland  
 Patricia Sweeney  
 Susan Sweetser  
 Chelsea Sweiss  
 Catherine & Gerald Swerdlick  
 Ty & Jan Symroski  
 Sami Tabbaa  
 Lucile Taber  
 Toni & Dan Tabor  
 Chris Tague  
 Judith Tanner  
 Mike Tateosian  
 Lee Anne Tauck  
 TAWANI Foundation  
 Dawn Taylor  
 Ann & Tom Tennery  
 Terry Tensi  
 Alice Tetelman  
 Kelsey Tetmeyer  
 The Shack of Sanibel Inc  
 The Steine & Mansbach &  
 Julia E. Frane Charitable Fund  
 The Therapy Center LLC  
 Tamara Theiler  
 Lori Theobald  
 Doreen Thomas  
 Harry Thomas  
 Kim Thomas  
 Christopher Thompson  
 Libet Thompson  
 Rick Thompson  
 Caroline Thrasher  
 William Throckmorton  
 Joyce-Ellen & Stephen Tibbets  
 Meredith Tiedemann  
 Philip Timm  
 Jeff Tinchler  
 Christopher Tipton  
 Tina & Guy Tober  
 Lynn Tolcott  
 Catherine Tomey  
 Maria Torres  
 Ellen Tosie  
 Austen Tosone  
 Amelia Tracy  
 Kay Tracy  
 Cheryl Traver  
 Paige Travis  
 Joan Trentman  
 Rachel & Paul Tritaick  
 Heidi Troxell  
 Nancy & Tex Trumbull

Kathleen Turner  
 Steven Turner  
 Doreen Tyburski  
 Peggy & Ted Tyson  
 Brigitte & Gene Uher  
 Katharine Urbati  
 Amy Van Andel  
 Molly Van Etta  
 Carl Van Note  
 Lynne VanDenburgh  
 Elizabeth Vandiver  
 Vincent Vena  
 Iva Verner  
 Nicolette Vernick  
 Philomena & Peter Vicari  
 Shari Vikmanis  
 Vineyards Country Club  
 Alan Vitous  
 Anita & Alex Vogel  
 Linda & Gary Vroegindewey  
 Jason Wade  
 Barbara Wagner  
 Louise Wagner  
 Robert Wahlert  
 Ellen Wall  
 Barb Wallace  
 Anne Walter  
 Connie Walters  
 Sally & David Walther  
 Annie Walwyn-Jones  
 Judy & Tom Ware  
 Josh Warren  
 Lucy Warren  
 Julia & William Waterman  
 Mary & Jack Waterman  
 Gretchen Watkins  
 Mary & Curtis Watkins  
 Janet Watts  
 Pamela Watts  
 Yleana Way  
 Amy & Mark Webberly  
 Beth & Gregory Weber  
 Jenny Wedge  
 Megan Wedig  
 Steve Wedlan  
 Ronald Weeks  
 David Wehner  
 Elaine & Rich Wehnes  
 Jessica Weiss  
 Richard Weiss  
 Deana & Lyman Welch  
 Yolande Welch  
 Diane Welk  
 Leslie Welk  
 Martha & Marshall Wells  
 Andrew Weltcheff  
 Elizabeth Wennes  
 Karen Werthmann

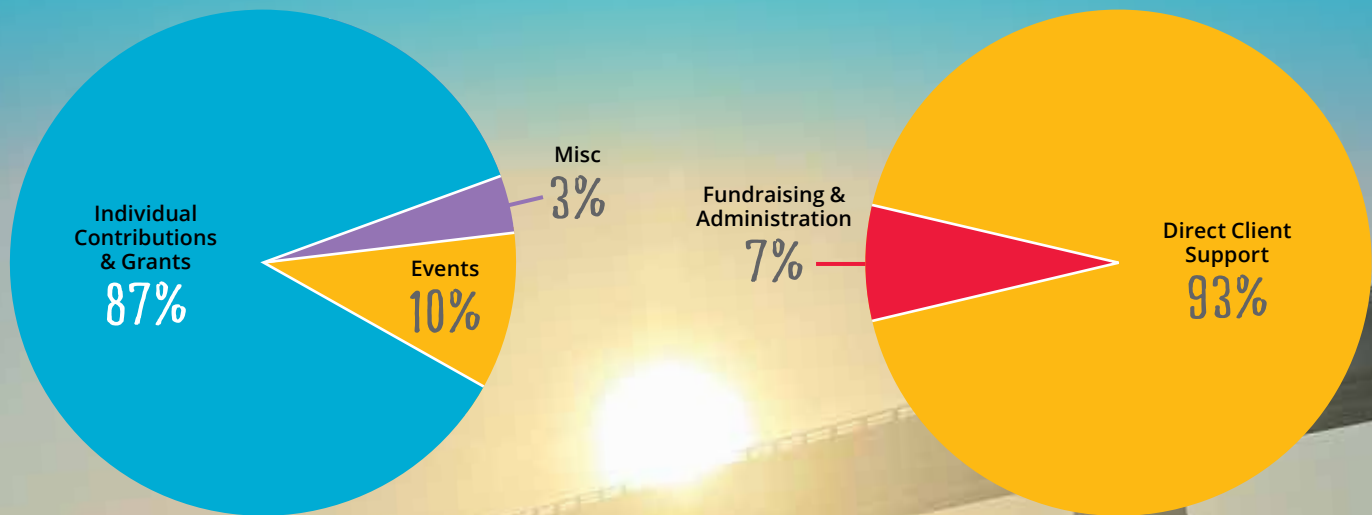
Barbara West  
 Lee West  
 Tom Westenberger  
 Kathy & Al Weyman  
 Garry Whalen  
 Michele Whalen  
 Haley Wheeler  
 Elizabeth White  
 Susan & Brian White  
 Beth Wicklund  
 Melanie Wiesenfeld  
 Melissa Wilcox  
 Julie Wilde  
 Barbara & George Wilgus  
 Cheryl & William William  
 Joyce Bartkowski & William Marvel  
 Dawn Clemons & William Thompson  
 Amanda & Frank Williams  
 Lisa & Kirk Williams  
 Nancy Williams  
 Tamara Williams  
 Ayre Williamson  
 Willow Studio & Nail Bar  
 Dayne Wilson  
 Lisa Wilson  
 Patricia Wilson  
 Stacia Wilson  
 Mark Wimmer  
 Walter Winans  
 Therese Winkel-Johnson  
 Lauren Winkler  
 Leah Winkler  
 Joan Winograd  
 Arnee & Walter Winshall  
 Penny Winter Nuttall  
 Jessica Wisdom  
 Dawn Wise  
 Julie Wojcik  
 Regina Wolczek  
 Winifred & Douglas Wood  
 Paula & Bob Woodlief  
 Donna Woods  
 Brenda Wright  
 Guan Wu  
 Beth Wytiarz  
 Charmaine Yeadon  
 Larry Yenhole  
 Michael Young  
 Jennifer & Michael Zajicek  
 Brenda & Arnold Zaltas  
 Sylla & Peter Zarov  
 Darlys & Curtis Zaskie  
 Elizabeth Zeiner  
 Diane Zieg  
 Gayle & Steve Zientek  
 Rebecca Zion  
 Rachael Zolinas  
 Jeanine & Jon Zywieci





# 2022 **financials**

## ANALYSIS OF FUNDING & EXPENDITURES



### 2022 revenue

Individual Contributions & Grants	\$4,034,033
Events (Net)	\$455,355
Misc & Other	\$117,802
<b>TOTAL REVENUE:</b>	<b>\$4,607,190</b>

### 2022 expenses

Direct Client Support	\$2,053,240
Fundraising & Administrative	\$153,843
<b>TOTAL EXPENSES:</b>	<b>\$2,207,083</b>
<b>NET OPERATING INCOME:</b>	<b>\$2,400,107</b>

\*CAPITAL CONTRIBUTIONS in 2022 were \$591,094 with \$400,000 of this amount used for MORTGAGE REDUCTION

\*\*NOT INCLUDED—Hurricane remediation & real property loss

*Note: figures not audited*



# planned giving

## & LEAVING A LEGACY

**Planned giving** is simply a commitment, either revocable or irrevocable, to give to a Section 501(c)(3) charity, such as FISH or its Foundation, as part of a donor's overall financial or estate planning (as contrasted with typical annual donations).

### types of planned gifts

**Bequests**—donations at death (through a Will or Trust) of cash, real estate, stocks, bonds, mutual funds, or other intangible assets

**Retirement Plans**—designation of FISH as a beneficiary of a retirement account, such as an IRA, 401(k), 403(b), pension or profit sharing plan

**Life Insurance**—designation of FISH as a beneficiary of a life insurance policy (whole life or term)

**Retained Life Estate**—transfer of real estate, such as a residence or commercial property, to FISH, but with the donor retaining the use of the property for the remainder of the donor's lifetime (e.g., the Woodring property)

### with a planned gift, a donor may

- *Create an endowment to generate annual income that provides for the development and enhancement of designated FISH programs and activities (e.g., Helping Hands or Food Pantry)*
- *Create an endowment to enhance FISH staff development or subsidize the compensation for a specific position, similar to endowing a professorship at a university*
- *Name the FISH Walk-In Center (or an office) for the donor or in honor/memory of a loved one or another person*

### already included FISH in your estate plan?

We would love to know so that we may appropriately recognize you as part of our **FISH Legacy Society**. Please contact Maggi Feiner or Maria Espinoza at 239.472.4775.

*"It gives me joy to help future generations of island neighbors for years to come!"*

—a FISH Legacy Society member

# true partners

## BUILDING & REBUILDING COMMUNITY



FISH is proud to partner with these amazing organizations, businesses, & individuals each & every day.



ACT Southwest Florida Abuse Counseling & Treatment  
Alzheimer's Association of Lee County  
American Red Cross, Lee County  
Amigos Center  
Arden Courts  
Area Agency on Aging SWFL  
Ashton Kirchner Group of Keller Williams Realty  
Bailey-Matthews National Shell Museum  
Bailey's General Store  
Bank of the Islands  
Bat Yam Temple of the Islands  
Beach Floor & Décor  
Beaches & Keys  
Beacon of Hope  
BIG ARTS  
Billy's Rentals  
Bob Janes Triage Center & Low Demand Shelter  
Breeze Newspapers  
Broadway Community Church  
Builders Care  
Calusa Waterkeeper  
Capacity Path  
Captiva Civic Association  
CareerSource of SWFL  
Castner Consulting  
Catering by Leslie Adams  
Center 4 Life  
Charity Pro's  
Charlotte Harbor Preserve State Park  
Child Care of SWFL  
Children's Advocacy Center of SWFL  
Children's Education Center of the Islands  
Cielo  
City of Sanibel  
City of Sanibel Recreation Center

Comfort Keepers  
Community Cooperative  
Community Coordinated Childcare of SWFL  
Costco Wholesale  
CROW  
CVS Sanibel  
Cycle Forward  
Deaf & Hard of Hearing Center  
DeMine Immigration Law Firm  
Dr. Doreen Greenburg  
Dubin Center  
Early Learning Coalition of SWFL  
ECHO  
Edison National Bank  
Elders Climate Action  
Elite Event Staffing SWFL  
EPIC Islands  
Family Health Centers of SWFL  
Fifth Third Bank Empower U  
Florida Department of Children & Families ACCESS Program  
Florida Department of Economic Opportunity  
Florida Gulf Coast University  
Florida Rural Legal Services  
Fort Myers Veterans Center  
Friends Who Care  
Fyzical Therapy & Balance Center  
Gene's Books  
George & Wendy's  
Sanibel Seafood Grille  
Gladiolus Learning & Development Center  
Global Empowerment Mission  
Goods 360  
Goodwill Industries of SWFL  
Great White Grill  
Habitat for Humanity  
Hajoca Corporation

Harry Chapin Food Bank of SWFL  
Hasbro Toys  
Hazelden-Betty Ford Foundation  
Heights Foundation  
Home Instead  
Hope Health Hospice  
Hope Parkinson Program  
Hortoons  
Interfaith Outreach of SanCap  
Island Interiors of Sanibel  
Island Parish Nurses  
Island Pharmacy, Inc  
Island Rentals  
Island Sun Newspaper  
Island Vacations  
Jerry's Foods  
JN Ding Darling  
Joey's Custard  
Key Biscayne Foundation  
Kona Kai Motel  
Lee County  
Emergency Management  
Lee County Health Department  
Immunization Program  
Lee County Human Services  
Lee County Legal Aid  
Lee County Parish Nurses  
Lee County Schools  
Lee County Sheriff's Department  
Lee Health Systems  
Lighthouse Café  
MacIntosh Books & Paper  
Miami Elementary School  
Midwest Food Bank  
Millennium Physicians Group  
Mission BBQ  
Mission Community Church  
MOMAwesome Foundation  
Naples Botanical Gardens  
Naples Soap Company

National Alliance on Mental Illness  
Nick Adams Photography  
Oasis Senior Advisors  
Operation BBQ  
Over Easy Café  
Paradise Candle & Soap  
Partners for Breast Cancer Care  
Pelican Knitters  
Quintessence Marine  
Rachel Pierce Gallery  
Radiology Regional  
REALTORS® Association of Lake & Sumter Counties  
Residence Inn by Marriott  
ReUnite  
Rotary Club of Sanibel Captiva  
Rotary International District 6960  
Royal Shell Vacations, Inc  
Saint Michael & All Angels Episcopal Church  
SalusCare  
Sandbar Restaurant  
Sanibel Air & Electric  
Sanibel Bike Club  
Sanibel Captiva Beach Resorts  
Sanibel Captiva  
Chamber of Commerce  
Sanibel Captiva Island  
Assoc of Realtors  
Sanibel Captiva Lions  
Sanibel Captiva Business Women's Association  
Sanibel Community Church  
Sanibel Community House  
Sanibel Congregational  
United Church of Christ  
Sanibel Deli  
Sanibel Fire Department  
Sanibel Island Farmer's Market  
Sanibel Island Rentals

Sanibel Island Therapy  
Sanibel Police Department  
Sanibel Public Library  
Sanibel School  
Sanibel Sea School  
Sanibel Taxi  
Sanibel-Captiva American Legion Post #123, Inc  
SCCF  
Seashells.com  
Senior Friendship Center of SWFL  
SHINE  
St. Isabel Church  
Starbucks  
Sundial Beach Resort & Spa  
The Robert Rauschenberg Foundation  
The Salvation Army  
The Sanibel Shack  
The Sanibel Sprout  
Third Wave Volunteers  
Three Crafty Ladies  
Thrive Senior Living at Beachwalk  
Toys Ahoy  
United Way 211  
United Way of Lee, Glades & Hendry Counties  
Valerie's House  
Veterans Service Office  
VIP Vacations  
Visiting Nurses Association of SWFL  
VITA Program  
We Care of Lee County  
Wells Fargo Sanibel Branch



# selfless volunteers

In 2022, a record number of FISH volunteers of all ages truly stepped up to help neighbors in meaningful ways. We invite you to choose how you would like to help, and we'll provide training!

Judy Addison  
Tom Addison  
Shirley Aikens  
Carole Alberio  
Dechen Alberio  
Marilyn Albridge  
Jennifer Altergott  
Pamela Anderson  
Tim Anderson  
Jim Bajek  
Joan Bajek  
Lynn Bauer  
Betsy Baumgartner  
Bill Baumgartner  
Jerry Bernay  
Cheryl Biltgen  
Gary Biltgen  
Dodie Bock  
Pat Boris  
Maryann Bridge  
Scott Bridge  
Ginger Brien  
Alex Broadwater  
Ashton Broadwater  
Dean Broadwater  
Nancy Brooks  
Joan Brusch  
Mame Byrne  
Randy Carson  
Eric Chaney  
Gary Chapman  
Lynda Condie  
Michael Conn  
Steve Corbin  
Diane Cortese  
Noelle Cramer  
James Cryder  
Maryanne Daly  
Jerry Davenport  
Linda Davenport  
Anne DeBenedictis  
Nancy DeBenedictis  
Elise Degen  
Heather Deiner  
Abigail DeLoache  
Sam Dinatale  
Mimie DiRico  
Debby Donahue  
Martha Driscoll  
Jerry Edelman

Barbara Ellis  
Dean Engdahl  
Kathy Engdahl  
Jack Evans  
Pierce Farhat  
Preston Farhat  
Tia Farhat  
Gerry Fitzgerald  
Louise Fitzgerald  
Eileen Fitzgerald-Spiehs  
Rose Flaherty  
Josie Floerchinger  
Wayne Floerchinger  
Marcy Forman  
Bev Forslund  
Kristin French  
Paula Friedman  
Beth Funderburg  
Brian Gaffey  
Kathleen Gagliardi  
Deborah Garrett  
Carol Gestwicki  
Lynn Goodwyne  
Carolyn Gorby  
Jerry Gorby  
Ira Grasgreen  
Doreen Greenberg  
Stanley Grogg  
Jeffrey Grossman  
Joan Gruver  
Laurel Hafener  
Kathy Hallblade  
Sherry Halleran  
Madge Hamilton  
Anne Hanley  
Mathew Hanley  
Jo Hardy  
Kristin Harvey  
Adair Heath  
Roberta Heller  
Dorothy Hemming  
Janice Henley  
Cheryl Herbert  
Linda Hines  
Ed Holden  
Mary Holden  
Jane Holder  
Janie Howland  
Alyson Howorth  
Bill Hungeling

Donna Hungeling  
Terry Ische  
Emma Jablonski  
Jane Jensen  
Mary Kahn  
Carol Kayes  
Jeff Kayes  
Dee Kelly  
Jack Kelly  
Bob Kern  
Lyn Kern  
Kathy Knoblauch  
Laura Korn  
Rosemarie Kraus  
Carol Kreml  
Gary Kreml  
Robin Krivanek  
Joyce Krivenko  
Charles Krivenko  
Pat Larsen  
Jim LaVelle  
Rachael Lazorik  
Donna Leahy  
Jaeda Leisure  
Cathie Lewis  
Marilyn Lewis  
Mary L'Hotta  
Barbara Lies  
Timothy Lind  
Emery Lowden  
Joni Luterman-Milgram  
Roman Lyskowski  
John MacKinnon  
Kristi MacKinnon  
Kristin Malone  
James Marianski  
Margaret Marianski  
Wendy Marinar  
Rena Martinson  
Joseph Mason  
Bobbie McGlynn  
Nicole McHale  
Kym McKeenan  
Janet McLaughlin  
John McLaughlin  
Lynn Meline  
Inky Meng  
Jack Meng  
LaNet Merrill  
Bob Miller

Cindy Miller  
Eleanor Miller  
Lisa Ann Miller  
Wamucii Morgan  
Arlene Mowry  
Carole Myer  
Chase Nave  
Nadine Nehls  
Kent Neitzke  
Sandy Nering  
Pat Norton  
Cathy Odlaug  
Mary O'Neill  
Dan Pace  
Elaine Pace  
Mariana Pardo  
Elaine Parente  
Elizabeth Parker  
Jerry Parkhurst  
Cathryn Peel  
Julie Peress  
Gerri Perkins  
Richard Perry  
Clare Phelan  
Karen Potoka  
John Prann  
Sue Prather  
Joanne Prestia  
Chuck Ramseth  
Jane Ramseth  
Beth Redpath  
Charles Reed  
Robin Reed  
Kathy Rice  
Ed Ridlehoover  
Linda Riggs  
Jennifer Rosenberg  
Missy Rothweiler  
Susan Ryckman  
Kathy Samson  
Esbeydi Sanchez  
Mary Jean Sanders  
Kandi Sanger  
Karen Sartoris  
Mary Alice Scanlan  
David Scheiber  
Shirley Schulz  
Ann Schwenzfeier  
Angelica Semler Welch  
Marty Sermersheim

Michael Sermersheim  
Sarah Shaffer  
Max Shen  
Sandon Shepard  
Stan Sikorski  
Marc Simmons  
Ellen Sloan  
Anne Smith  
CJ Stephens  
Sonya Storey  
Susan Sweetser  
Jenn Sweigart  
Nancy Terelle  
Bradford Thompson  
Linda Thompson  
Roger Timm  
Carol Torbey  
Kim Tropf  
Kathleen Turner  
Linda Uhler  
Patty Vander Waal  
Michele Vikartofsky  
Alan Vitous  
Babs Wagner  
Ed Wallace  
Ruth Walters  
Mary Watkins  
Beverly Webb  
Beth Weiss  
Helene Weyant  
Bob Williams  
Leah Winkler  
Jill Wisniewski  
John Wisniewski





SERVE HUMBL



# our dedicated board & staff

## LEADING & DOING FROM THE GROUND UP

Since the beginning, FISH has been doing whatever it takes to help weather the storms of life. We dig in and get our hands dirty. We navigate the possibilities. We provide resources and find solutions. **We are truly thankful for our board members and caring staff who work hard and serve humbly each day to make life better for our island neighbors.**

### 2022 board members

Jim Metzler, PhD—*Board Chair*  
Ellen Sloan—*Board Vice Chair*  
Maggi Feiner—*President & CEO*  
Greg Burton—*Treasurer*  
Ann-Marie Wildman—*Secretary*  
Robert Bowden—*Director (partial term)*  
Jim Brady—*Director*  
Melissa Congress—*Director*  
Steve Klug—*Director*  
Nicole McHale—*Past Board Chair*  
Lisa Ann Miller, MD—*Director*  
John Morse—*Director, Emeritus*  
Jim Nelson—*Director*  
Kathy Samson—*Director*  
Sheridan Snell—*Past Board Chair*

### professional staff

Maria Espinoza—*Executive Director*  
Nitza Lopez—*Social Services Director*  
Erika Broyles—*Senior Services Director*  
Jennifer Pagano—*Education & Outreach Director*  
Manuela Martinez—*Program Coordinator*  
Maggie Goldsmith—*Marketing & Grants*  
Laura Rodriguez—*Accounting Manager*  
Kim V. Ouellette—*Operations & Volunteer Manager*  
Heike Gosselin—*WIC Manager*

**Congratulations to our own Maria Espinoza**, FISH Executive Director, who was awarded the **2022 Young Professional of the Year Award** by the Greater Fort Myers Chamber of Commerce, in recognition of her outstanding contributions to our community!

*"As I continue to grow with the FISH organization, I'm thankful to have the support of the FISH Board and an extraordinary team of dedicated professionals and volunteers that allows us to continue to serve our community."*

—Maria







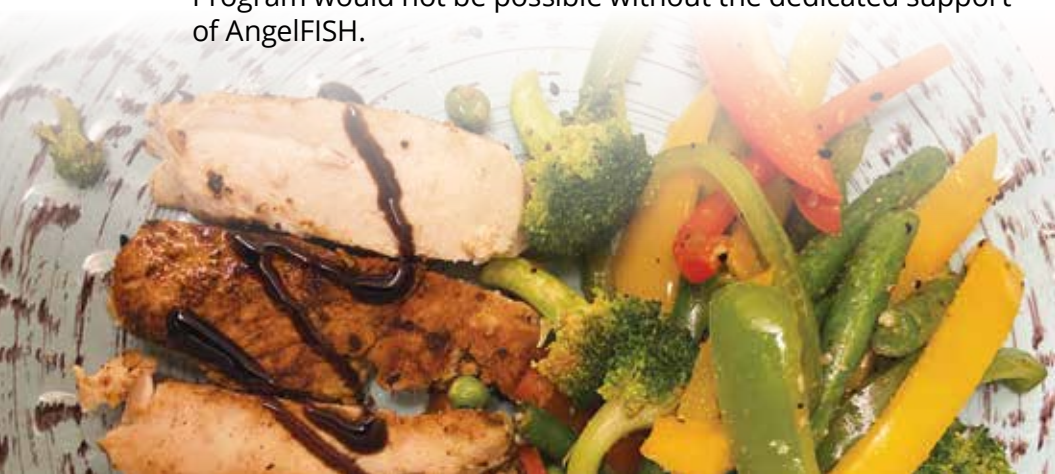
The AngelFISH Society allows women in our community to direct their giving in focused, strategic ways, with the goal of providing sustainable funding for the FISH of Sanibel-Captiva Foundation, Inc—an endowment created to support the future of FISH.

The amazing work of our AngelFISH Society continues to carry on with great success despite the incredible challenges we have faced as an island community during our first two years. We are focused on helping neighbors move **onward and upward** as we jump into our 3rd annual programmatic project.

## introducing the FISH FOOD BOX PROGRAM

The AngelFISH Society is proud to support the launching of another new supplement to the FISH Food Pantry. The **FISH Food Box Program** provides an assortment of fresh produce and food pantry items to islanders that are unable to visit our Sanibel site. We will provide an option for delivery, once weekly, to those who request and sign up for this FISH service. We are also providing small grills and charcoal for those without power or lacking functional, working appliances.

The work of FISH through programs such as the Fish Food Box Program would not be possible without the dedicated support of AngelFISH.



*“As more islanders return, we hope they will find this opportunity helpful as they continue to recover from Hurricane Ian.”*

—Manuela Martinez,  
Program Coordinator





# moving **on**

## TO OUR BRIGHTEST DAYS YET

"Hope can be found in the unexpected. It is often in the darkest times we find the light of help to guide us onward. FISH of SanCap continues to be a beacon in the storms of life for our communities. We are truly blessed to have such an invaluable social service organization to provide resources, direction and hope for the evergrowing, everchanging needs of our island neighbors. As we work to find our way toward recovery and even brighter days after Hurricane Ian, we can be assured that FISH will be there every step of the way."

—Geoffrey W. Roepstorff  
*CEO, Bank of the Islands/Edison National Bank*  
Island Neighbor



impact report graciously  
underwritten by



**FISH**  
OF SANCAP

2430-B Periwinkle Way, Sanibel FL 33957 239.472.4775 • [fishofsancap.org](http://fishofsancap.org)